



## Sewing Essentials: Attaching a Bottom Panel Tutorial

### Description



One of the most looked over skills is attaching panels together. In this tutorial, we will teach you how to accurately attach panels together, more specifically, skirt panels onto bodice, as well as skirt panels in between waistbands. You can translate this skill onto other type of garments, like rompers, overalls and trousers. Just remember, notched mark is your best friend!

## ***Tools***

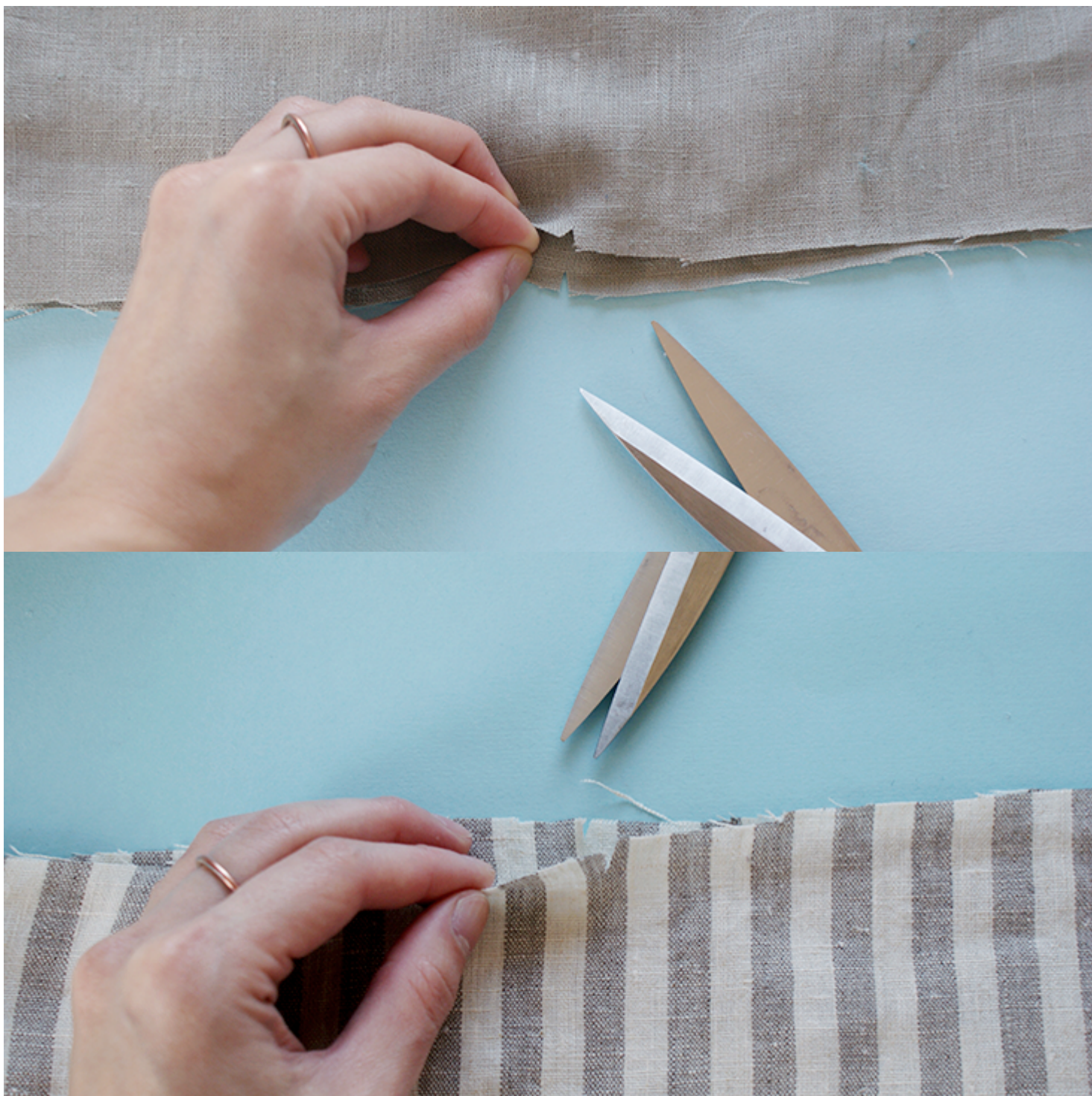
Fabric, matching sewing thread  
Pin, scissors, tape measure

## **Steps**

***We will look at how to attach the skirt panels onto a bodice first.*** For this tutorial all the panels are sewn together, but we are aware there are other tutorials that require a zip at the back of a dress, and therefore you will have two separate back panels. You can easily match those panels up without a problem.

1. At this point, the bodice panels and skirt panels are sewn at the side seams already.
2. Make' small notched marks at the centre fold lines for the bodice and the skirt.





3. With the right sides together, slide the bodice panels into the skirt, where the waist edges meet.





4. Match together the front notched marks, the side seams, as well as the back notched marks of the bodice and the skirt.





5. Pin at the seam allowance and stitch along this line.







6. Press the seam open and you have successfully attached them together.





***Now onto waistbands.*** This is more common with trousers and skirts, and is done with waistbands that are folded on the top edge. There might be tutorials where the waistband is longer than the length of the skirt panels, because there is overlapping (for buttons or hooks), simply add a notched mark where the skirt needs to be attached until, and that is the end point for



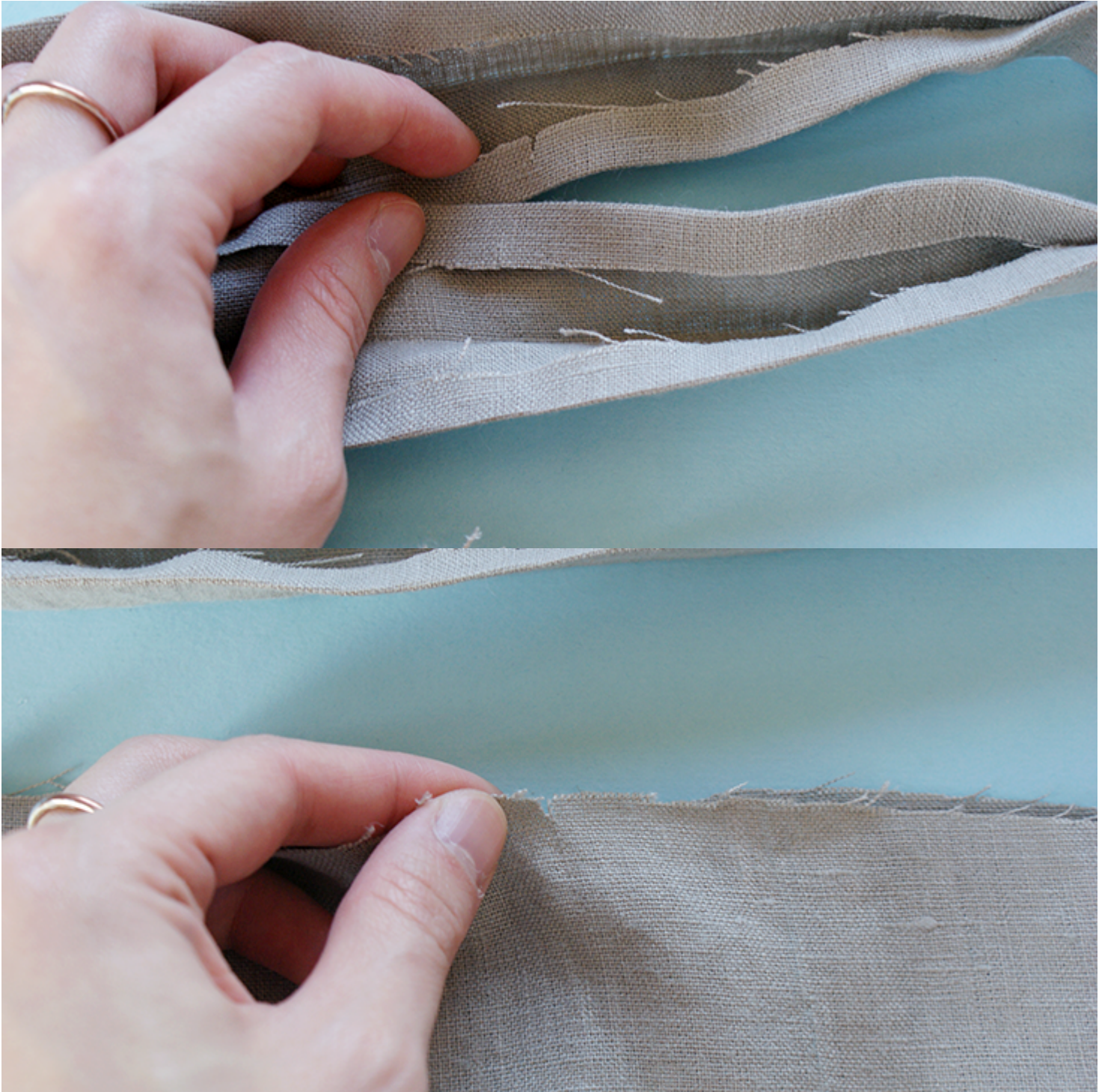
the skirt panel.

7. Sew the waistbands together at the side seam, and press it in half, length wise. Then press the raw edges into the wrong side of the waistband, towards the pressed centre fold.





8. Once again, create notched marks at the raw edge (that has been pressed inwards) of the waistband, as well as the skirt panels.





9. If you are making a skirt that is gathered, make sure the notched marks were created before you start to gather the panel.
10. Sandwich the waistband onto the top edge of the skirt panel, matching up with notched marks.



11. Pin on the right side of the garment and top stitch over.





**Notch marks are very important when it comes to sewing accurately, and will make your life so much easier! With this new skill why not take a look at our great selection of linen, and decide on something new to sew and attach next!**

## **CATEGORY**

1. TUTORIALS

### **Category**

1. TUTORIALS

### **Date Created**

December 28, 2015

### **Author**

cynthia-fong